

General Description

This demonstration board utilizes the AL8823 LED driver-controller providing a cost effective solution for offline high brightness MR16/AR111 LED applications. The AL8823 LED driver board has good compatibility with Electronics Transformers (ET). This user-friendly evaluation board provides users with quick connection to their different types of LEDs string. The demonstration board can be modified easily to adjust the LED output current and the number of series connected LEDs that are driven.

A bill of materials is included that describes the parts used on this demonstration board. A schematic and layout have also been included along with measured performance characteristics. These materials can be used as a reference design for your products improving your product's time to market.

Key Features

1. Good electronic transformer(ET) compatibility
2. High efficiency >82% at 12Vac input voltage
3. High PF >0.9
4. Low THD

Applications

MR16/AR111 LED Lighting

Specifications

Parameter	Value
AC Input Voltage	12Vac
Output Power	11.55W
LED Current	350mA
LED Voltage	33V
Power Factor	>0.9
Efficiency	>82 %
Dimension	Φ 47mm
RoHS Compliance	Yes

Evaluation Board



Figure 1: Top View

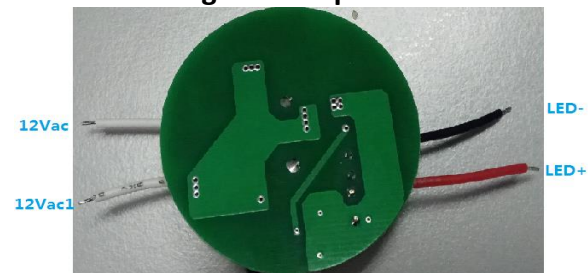


Figure 2: Bottom View

Connection Instructions:

12VAC Input: White —12Vac
 12VAC1 Input: White —12Vac
 DC LED+ Output: L+ (Red)
 DC LED- Output: L- (Black)

Board Layout

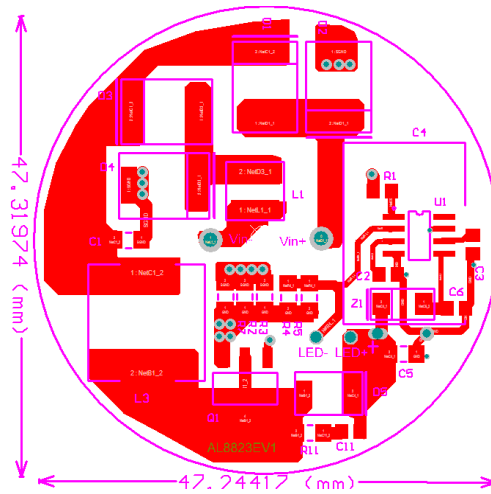


Figure 3: PCB Layout Top View

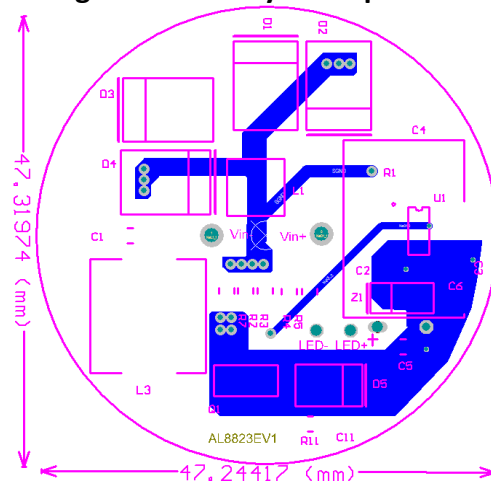


Figure 4: PCB Layout Bottom View

Quick Start Guide

1. Ensure that the AC source is switched OFF or disconnected.
2. Connect the 12V_{ac} AC line wires of power supply to two test points of “12VAC” on the left side of the board.
3. Connect the anode wire of external LED string to LED+ output test point.
4. Connect the cathode wire of external LED string to LED- output test point.
5. Turn on the main switch. LED string should light up.

Schematic

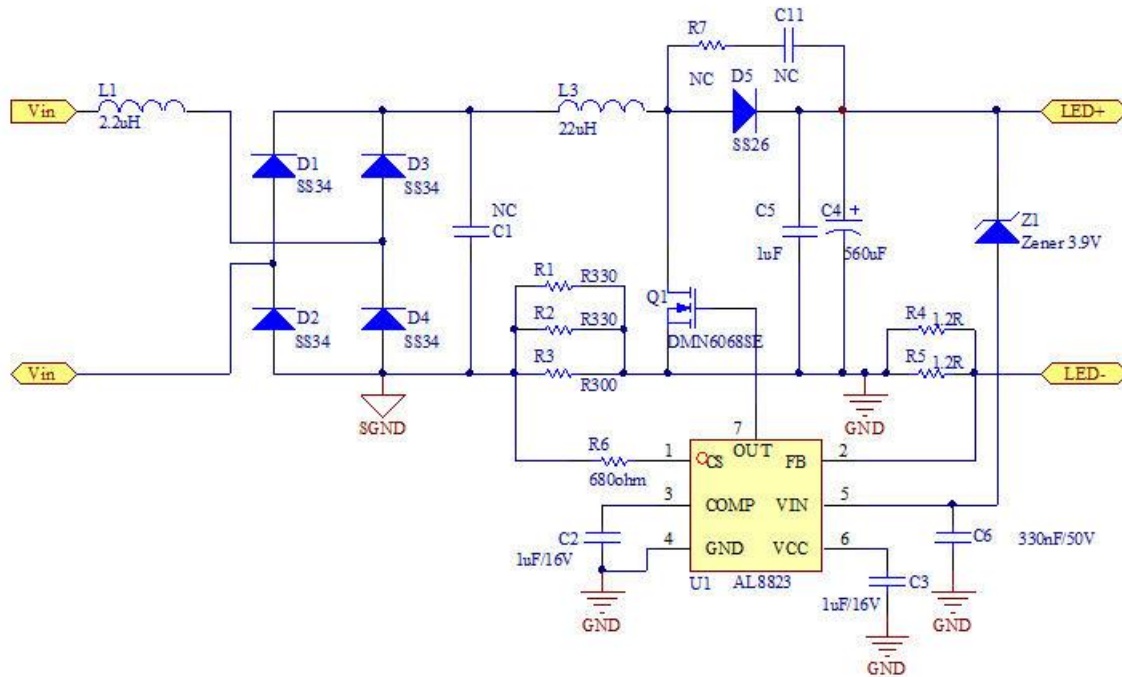
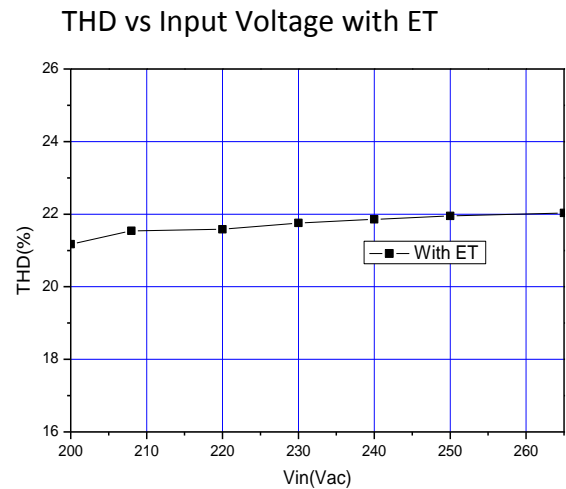
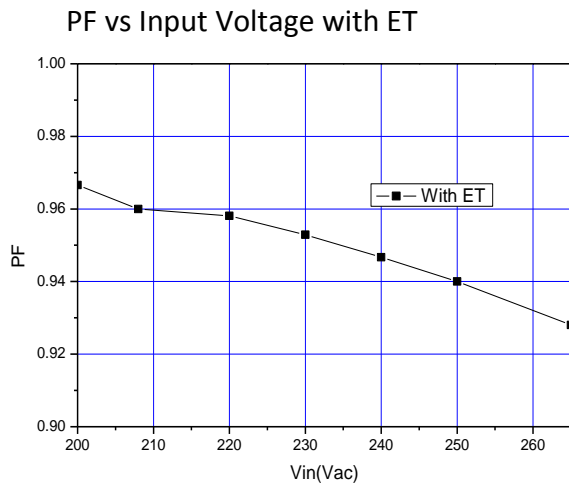
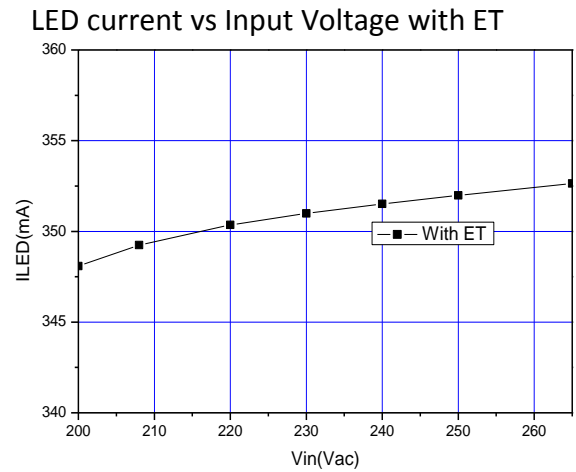
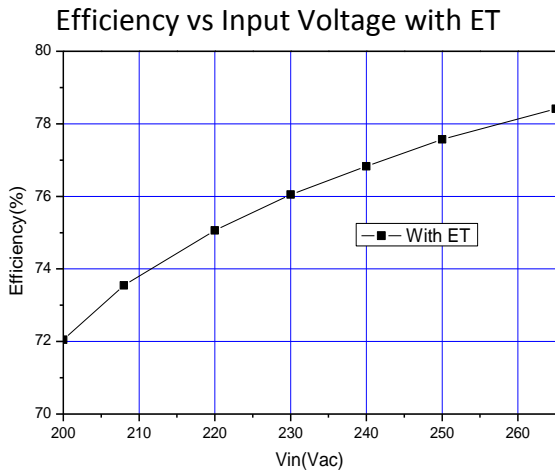
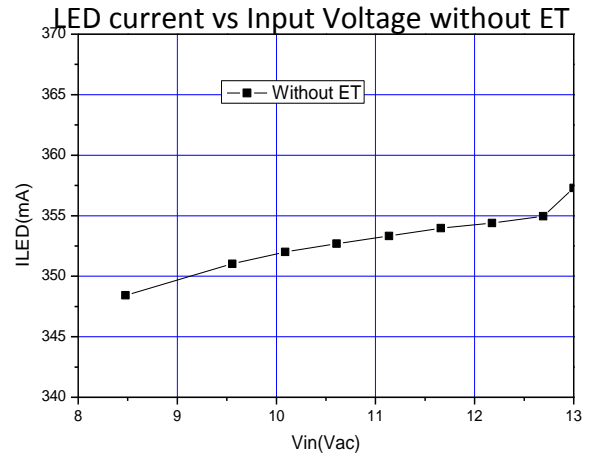
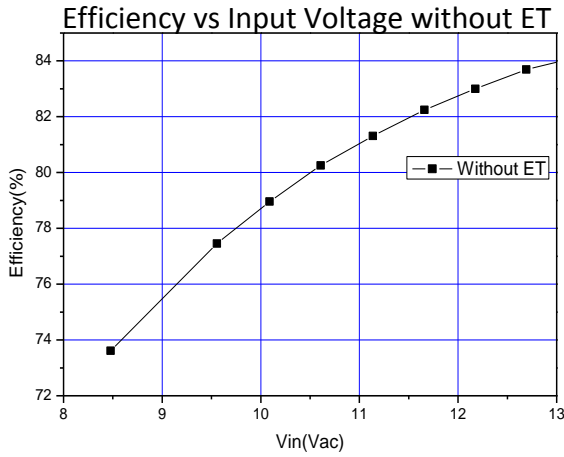


Figure 5: Schematic Circuit

Bill of Material

Item	Quantity	Package	Description
C1,C11	0	0805	NC
C2, C3	2	0603	SMD Ceramic Capacitor, 1uF/16V, X7R
C4	1	DIP, 12*20	Electrolytic Capacitor, 560uF/50V, AISHI
C5	1	1206	SMD Ceramic Capacitor, 1uF/50V, X7R
C6	1	0603	SMD Ceramic Capacitor, 330nF/50V, X7R
D1, D2, D3, D4	4	SMC	Schottky Diode, B340, 3A/40V,Diodes Inc
D5	1	SMA	Schottky Diode, B260, 2A/60V,Diodes Inc
L1	1	SMD	Inductor, 2.2uH/4.6A , 5.8x5.2mm, 732774022, Wurth
L3	1	SMD	Inductor, 22uH/4.1A, 12x12mm, 744770122, Wurth
Q1	1	SOT223	MOSFET, DMN6068SE, 4.5A/ 60V, Diodes Inc
R1, R2	2	1206	SMD Resistor,R330, 1%, 1/4W
R3	1	1206	SMD Resistor,R300, 1%, 1/4W
R4	2	1206	SMD Resistor ,1.2R, 1%, 1/4W
R6	1	0603	SMD Resistor,680R, 1%, 1/16W
R7	0	1206	NC
U1	1	SO-8	IC, AL8823, Diodes Inc
Z1	1	SOD-123	Zener Diode, BZT52C3V9, Diodes Inc

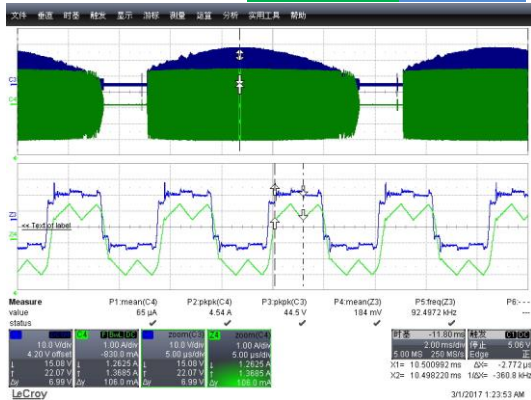
System Performance



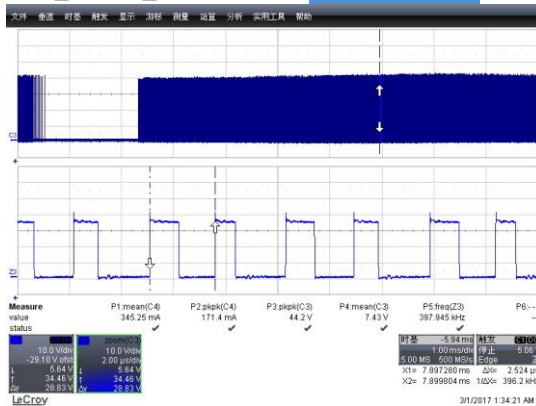
Note: ET stands for electronic transformer Tridonic VIPER

Functional Waveform

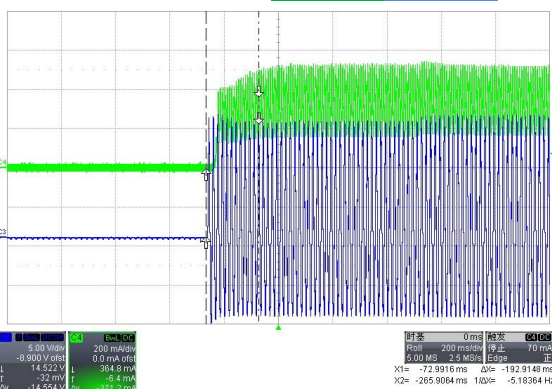
Input Voltage(VET) & Input Current(IET)
 Vin=230V with ET **G-IET** **B-VET**



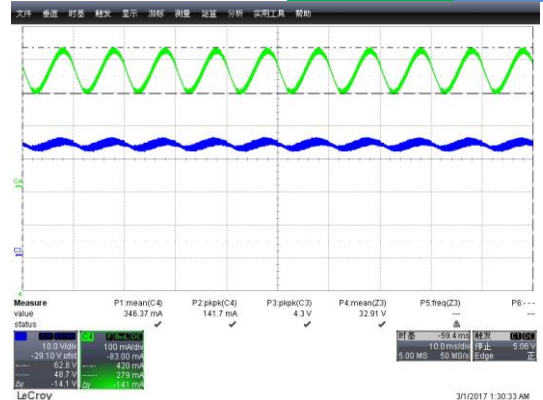
Q1 Drain Waveform Vin=230Vwith ET
 VQ1_DRAIN_MAX=36V **B-VDRAIN**



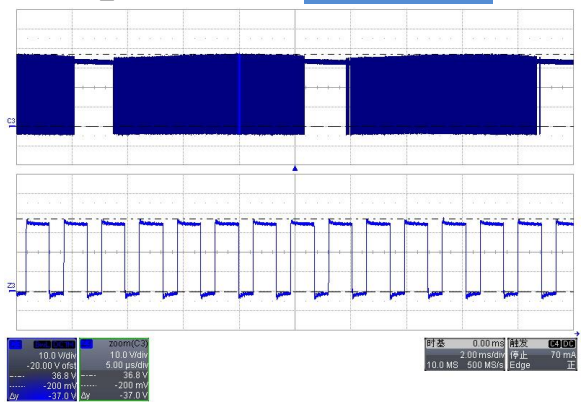
Start time @ Vin=12Vac without ET
 Start time=193ms **G-ILED** **B-Vin**



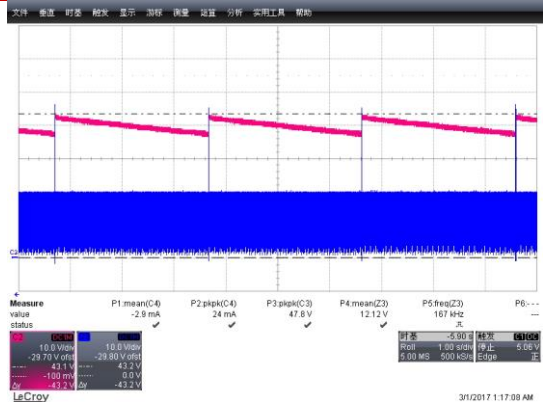
LED Current Ripple & Output voltage@ Vin=230VAC
 with ET Ripple=141mA **G-ILED** **B-VLED**



Diode D5 Waveform Vin=230V with ET
 VD5_MAX=36.8V **B-VD5**



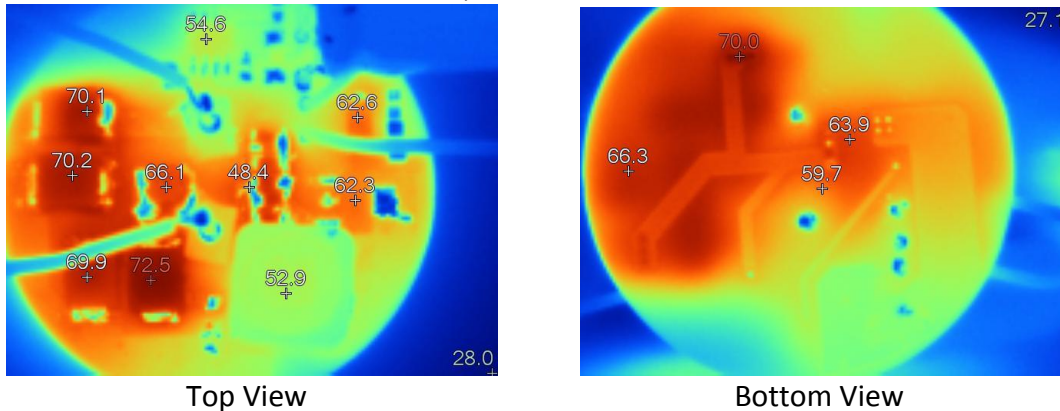
LED Open Protection @ Vin=12Vac without ET
R-VLED+ **B-VQ1_DRAIN**



Note: ET stands for electronic transformer Tridonic VIPER;

Thermal Test

The test is without electronic transformer, and the board burns for 30 minutes.



Transformer Compatibility List

1) 230VAC to 12VAC Electronic Transformers

Index	Electronic Transformers (230VAC to 12VAC)		Performance (No Flicker)
	Brand	Model	
1	PHILIPS	ET-E 105(50-105w)	√
2	PHILIPS	Primaline 70 230-240(20-70w)	√
3	SELF	SET105F-2 (35-105W)	√
4	IBL	4104	√
5	YANKON	ET-60E (20-60w)	√
6	TRIDONIC	VIPER 60VA	√
7	ACTEC	MINNI60	√
8	Nelson	MTECOUGAR60	√

2) 120VAC to 12VAC Electronic Transformers

Index	Electronic Transformers (120VAC to 12VAC)		Performance (No Flicker)
	Brand	Model	
1	LIGHTECH	LET75(75W) dimmer	√
2	HATCH	HD105-120	√
3	HATCH	RS12-60M(60W) dimmer	√
4	HATCH	RS12-150(150W)	√
5	HATCH	RS12-30M-LED(30w)	√
6	HATCH	VS12-60W(60W)	√

Note: √ = No Flicker

IMPORTANT NOTICE

DIODES INCORPORATED MAKES NO WARRANTY OF ANY KIND, EXPRESS OR IMPLIED, WITH REGARDS TO THIS DOCUMENT, INCLUDING, BUT NOT LIMITED TO, THE IMPLIED WARRANTIES OF MERCHANTABILITY AND FITNESS FOR A PARTICULAR PURPOSE (AND THEIR EQUIVALENTS UNDER THE LAWS OF ANY JURISDICTION).

Diodes Incorporated and its subsidiaries reserve the right to make modifications, enhancements, improvements, corrections or other changes without further notice to this document and any product described herein. Diodes Incorporated does not assume any liability arising out of the application or use of this document or any product described herein; neither does Diodes Incorporated convey any license under its patent or trademark rights, nor the rights of others. Any Customer or user of this document or products described herein in such applications shall assume all risks of such use and will agree to hold Diodes Incorporated and all the companies whose products are represented on Diodes Incorporated website, harmless against all damages.

Diodes Incorporated does not warrant or accept any liability whatsoever in respect of any products purchased through unauthorized sales channel.

Should Customers purchase or use Diodes Incorporated products for any unintended or unauthorized application, Customers shall indemnify and hold Diodes Incorporated and its representatives harmless against all claims, damages, expenses, and attorney fees arising out of, directly or indirectly, any claim of personal injury or death associated with such unintended or unauthorized application.

Products described herein may be covered by one or more United States, international or foreign patents pending. Product names and markings noted herein may also be covered by one or more United States, international or foreign trademarks.

This document is written in English but may be translated into multiple languages for reference. Only the English version of this document is the final and determinative format released by Diodes Incorporated.

LIFE SUPPORT

Diodes Incorporated products are specifically not authorized for use as critical components in life support devices or systems without the express written approval of the Chief Executive Officer of Diodes Incorporated. As used herein:

A. Life support devices or systems are devices or systems which:

1. are intended to implant into the body, or
2. support or sustain life and whose failure to perform when properly used in accordance with instructions for use provided in the labeling can be reasonably expected to result in significant injury to the user.

B. A critical component is any component in a life support device or system whose failure to perform can be reasonably expected to cause the failure of the life support device or to affect its safety or effectiveness.

Customers represent that they have all necessary expertise in the safety and regulatory ramifications of their life support devices or systems, and acknowledge and agree that they are solely responsible for all legal, regulatory and safety-related requirements concerning their products and any use of Diodes Incorporated products in such safety-critical, life support devices or systems, notwithstanding any devices- or systems-related information or support that may be provided by Diodes Incorporated. Further, Customers must fully indemnify Diodes Incorporated and its representatives against any damages arising out of the use of Diodes Incorporated products in such safety-critical, life support devices or systems.

Copyright © 2017, Diodes Incorporated

www.diodes.com